

Salwico Monitoring



When Safety Matters

Salwico G3600/G3601
Inert Gas Oxygen Analyzing System
With Durable Zirconia Sensors

Salwico G3600/G3601 Inert Gas Oxygen Analyzing System

With Durable Zirconia Sensors

Consistent monitoring the content of oxygen in inert gas. The G3500i was one of the first I.G. oxygen analyzers certified under the EU Marine Equipment Directive. Now the next generation G3600/G3601 enter the market.

Just as its predecessor, extremely well reputed by manufacturers, vetting inspectors, and ship operators for its easy-fit construction and feasibility for retrofit.

The G3500i Inert Gas Oxygen Analyzer have since 2003 provides accurate real-time data for monitoring inert gas and controlling its production. Now the successor, the G36 O2 analyzers substitute the former model. The new concept still using the superior, yet improved Zirconia cell, suitable for the harsh and stressful marine environment, yet new features is implemented; touch screen, galvanically isolated and enhanced analogue signal; as well as trend graph display and data logging functions.



The G36 is the first system approved and certified under European MED heading A1/3.54 for fixed oxygen analyzers. Since July 2009 MED type approval are mandatory on European flagged vessels, including Norway.

The new version comes in one compact version G3600, or a redundant version G3601. The latter quite appreciated by ship operators whom once have experienced a monitoring failure during loading or discharge.

The G36 Oxygen Analyzer provides accurate, real-time data for monitoring inert gas and controlling its production. The system is based on a new type of Zirconia cell, which is adapted to the harsh and stressful marine environment.

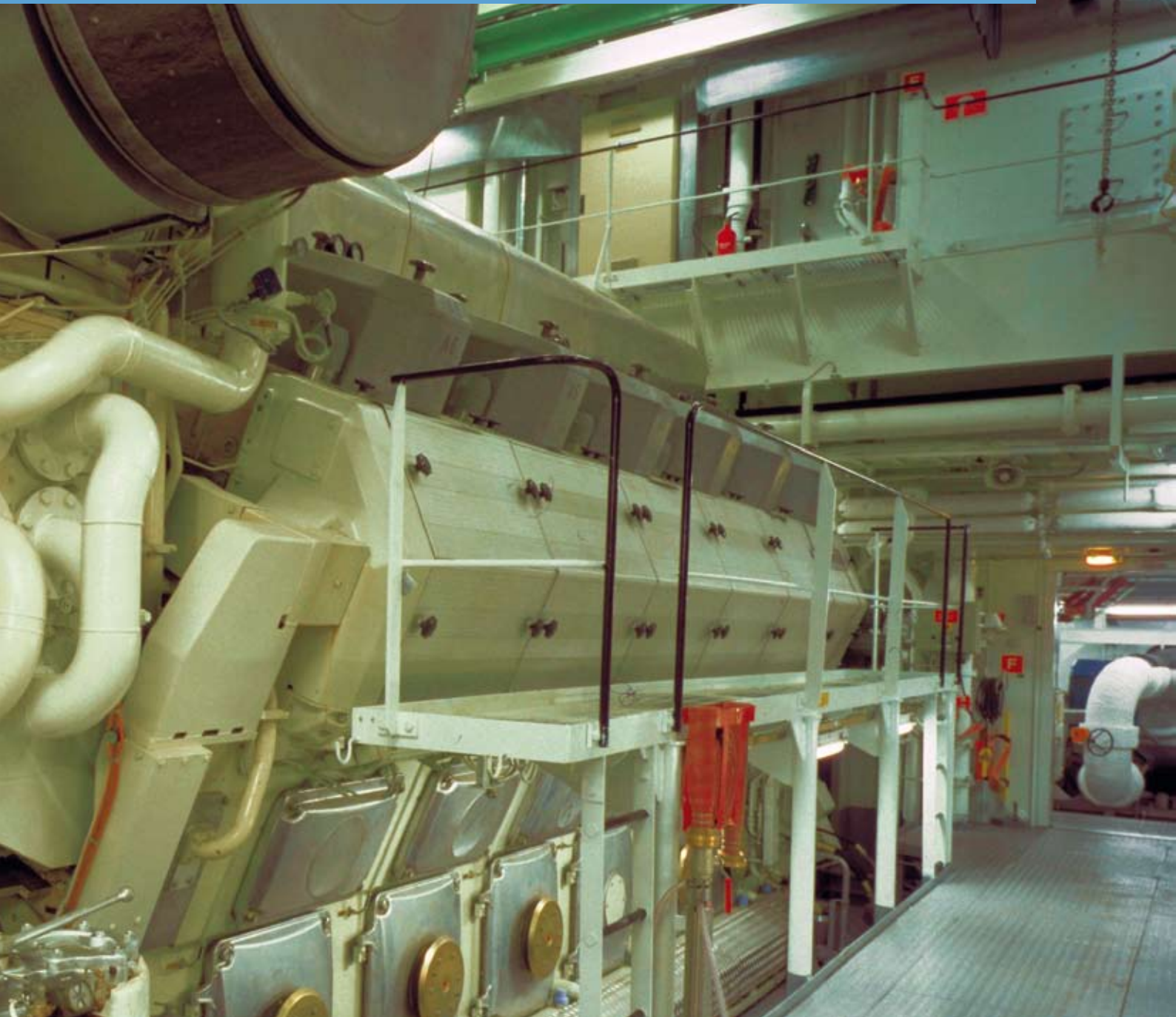
Unlikely many other brands, the Zirconia cell is easily stored and have unlimited shelf-life.

The G36 do analyze both flue gas based and nitrogen based inert gas and are easy adapted to the individual needs of any vessel.

The new G36 is easily set-up for co-operation with the IG-generator and can also easily be interfaced to other coherent systems. Both the monitoring range and the signal output range are fully scalable according to individual needs and special requirements and analogue outputs and alarm levels are configured by the touch screen.

The G36 further offer the option of inert gas flow monitoring and both versions allow the flush mounted G36p version. Quite appreciated and feasible for retrofit installations.

If one sensor or analyzer fails, switch over to sensor/analyzer #2 is like snapping fingers. No need for external service staff or a replacement of the complete unit.



KEY FEATURES

- Certified under the M.E.D. by Bureau Veritas
- Proven functionality for vetting inspectors
- Extremely easy to install, maintain and use
- In-situ calibration, option for simplified calibration
- Configurable measuring range, signal output and alarms.
- Long time sensor stability and easy replacement.
- Worldwide customer support via the Consilium service network.



Consilium worldwide



SWEDEN

Consilium Marine & Safety AB

Fire & Gas Marine Division
 Gothenburg
 Phone: +46 31 710 77 00
 cmsab@consilium.se

Navigation Division
 Stockholm
 Phone: +46 08 563 05 100
 cmsab@consilium.se

Storm & Co Skeppsradio AB
 Gothenburg
 Phone: +46 31 51 35 10
 stormco@stormco.se

BELGIUM

Consilium Marine Systems BV
 Zeebrugge
 Phone: +32 50 70 30 97

CHINA
Consilium Shanghai Co. Ltd.
 Shanghai
 Phone: +86 21 5152 22 60
 sales@consilium.cn

Dalian
 Phone: +86 411 8386 4460

FINLAND
Consilium Marine OY
 Helsinki
 Phone: +358 405 25 28 25
 info@consiliummarine.fi

GERMANY
Consilium GmbH
 Hamburg
 Phone: +49 40 822 22 95-0
 consilium@consilium-hamburg.de

GREECE
Consilium Marine Hellas
 Piraeus
 Phone: +30 210 428 7097/8
 info@consiliumhellas.gr

INDIA

Consilium India Pvt. Ltd.
 Mumbai
 Phone: +91 2267935150-53

Vishakhapatnam:
 Phone: +91 891 301 03 20
 consilium.vizag@consilium.ae

ITALY
Consilium Marine Italy Srl.
 Florence
 Phone: +39 0571 68121
 cmi@consilium.it

Genova
 Phone: +39 010 5533900

Naples
 Phone: +39 081 54 23122

JAPAN
Consilium Nittan Marine Ltd
 Tokyo
 Phone: +81 03 5465 1881
 info@consilium-nittan.com

NETHERLANDS
Consilium Marine Systems BV
 Rotterdam
 Phone: +31 182 382 422

NORWAY
Consilium Scandinavia AS
 Oslo
 Phone: +47 22 30 90 30
 mail@consilium-norway.no

SPAIN

Consilium RMI Spain S.A.
 Bilbao
 Phone: +34 94 404 2121
 attcliente@consiliumrmisspain.com
 Algeciras
 Phone: +34 94 404 2121

Las Palmas
 Phone: +34 94 404 2121

Barcelona
 Phone: +34 94 404 2121

Valencia
 Phone: +34 94 404 2121

SINGAPORE
Consilium Marine
Singapore Pte. Ltd.
 Singapore
 Phone: +65 6570 8998
 mail@consilium.sg

SOUTH KOREA
Consilium Marine Korea Ltd.
 Pusan
 Phone: +82 51 740 5869/71-3

QATAR
Consilium Qatar LLC
 Doha
 Phone: +974 466 53 32

UAE
Consilium Middle East (FZC)
 Sharjah
 Phone: +971 6 55 70 740

UAE cont

Consilium Middle East
General Contracting LLC
Consilium Middle East Equip
& Spare Parts LLC
 Abu Dhabi
 Phone: +971 2 622 93 46

UK
Consilium Marine UK
 Folkestone
 Phone: +44 1268 41 77 45
 info_uk@consilium.co.uk

Glasgow
 Phone: +44 1268 41 77 45

USA
Consilium Marine US
 Fort Lauderdale
 Phone: +1 954 791 7550

Long Beach
 Phone: +1 954 791 7550

VIETNAM
Consilium Vietnam JSC
 Hanoi
 Phone: +84 4 37 93 14 31

Ho Chi Minh City
 Phone: +84 8 410 13 38



www.consilium.se